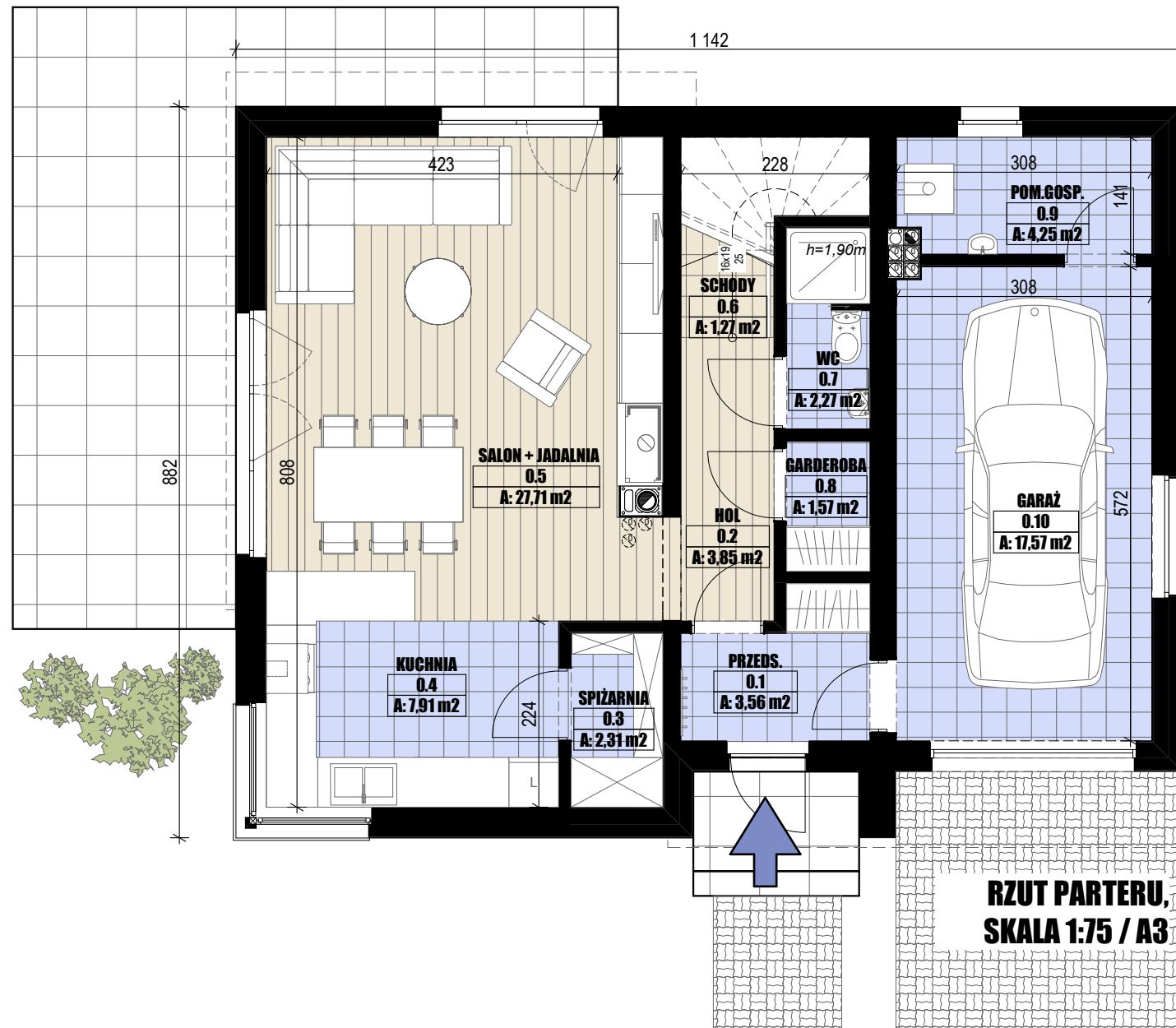
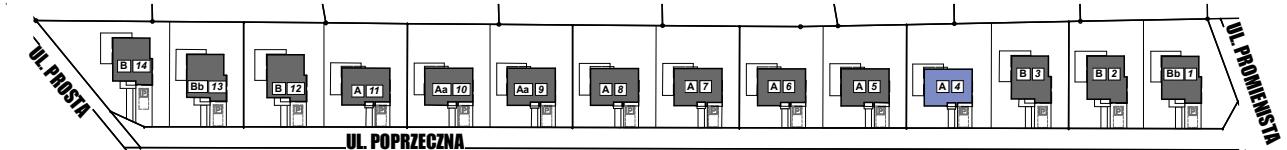
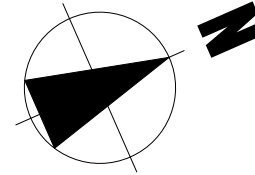


BUDYNKI MIESZKALNE JEDNORODZINNE WOLNO STOJĄCE W MIERZYNIE

BUDYNEK TYPU "A"



ZESTAWIENIE POWIERZCHNI

| PARTER: | | PODDASZA: | |
|----------------------|---------------------------|--------------|---------------------------|
| 0.1 PRZEDSIONEK | 3,56m ² | 1.1 SCHODY | 3,72m ² |
| 0.2 HOL | 3,85m ² | 1.2 KORYTARZ | 6,99m ² |
| 0.3 SPIŻARNIA | 2,31m ² | 1.3 POKÓJ | 10,65m ² |
| 0.4 KUCHNIA | 7,91m ² | 1.4 GABINET | 13,27m ² |
| 0.5 SALON + JADALNIA | 27,71m ² | 1.5 ŁAZIENKA | 7,23m ² |
| 0.6 SCHODY | 1,27m ² | 1.6 POKÓJ | 16,12m ² |
| 0.7 WC | 2,27m ² | 1.7 POKÓJ | 15,00m ² |
| 0.8 GARDEROBA | 1,57m ² | | 72,98m² |
| 0.9 POM. GOSPODARCZE | 4,25m ² | | |
| 0.10 GARAŻ | 17,57m ² | | |
| | 72,27m² | | |

PLAN SYTUACYJNY

